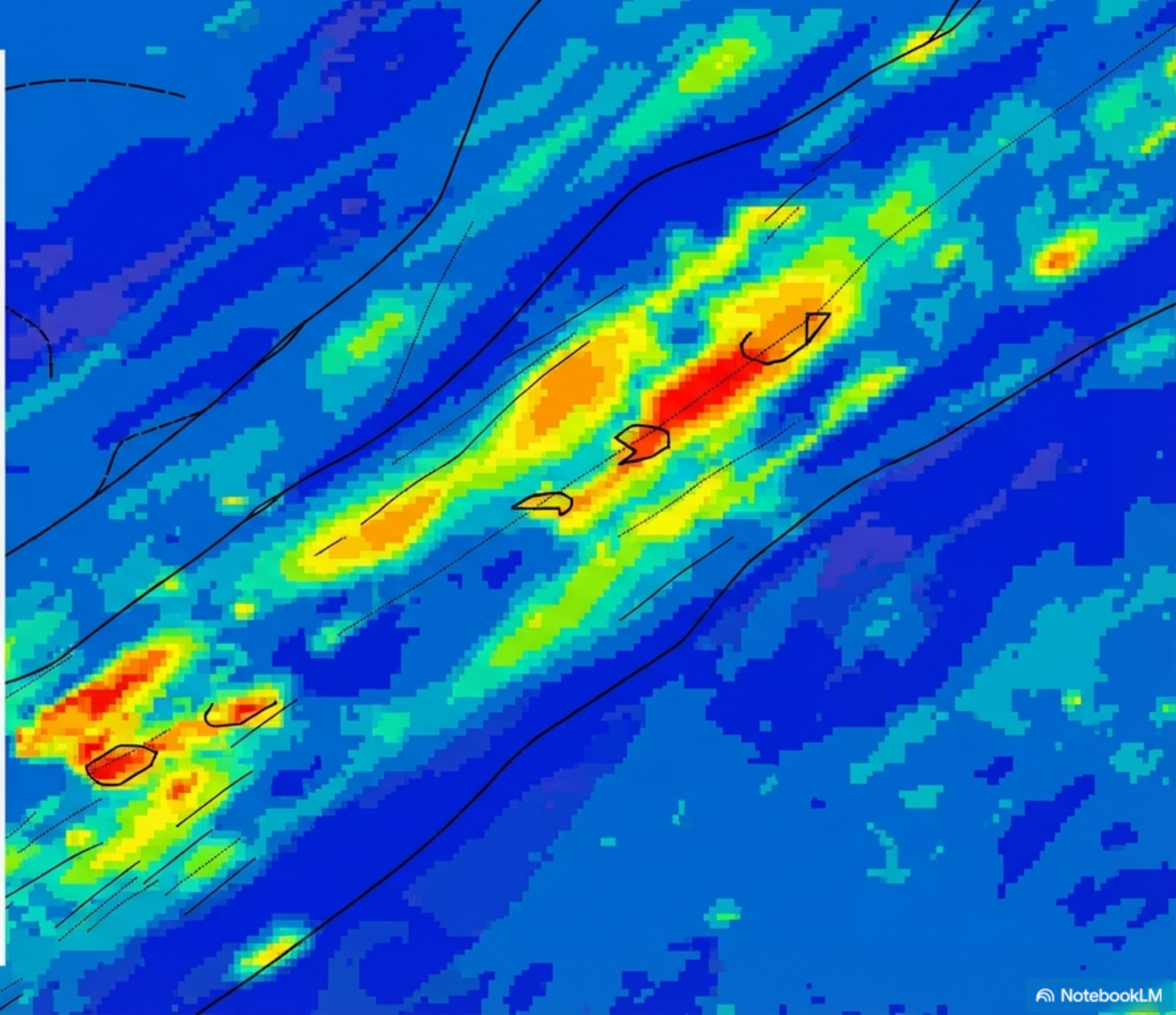


Bellechasse Gold Project

Unlocking Value through AI Targeting

Exploration Strategy & Prospectivity Assessment
Southern Quebec, Canada

Prepared for: NQC Lithium Corp
Technical Partner: Mercator Geological Services
Date: September 25, 2025



Executive Summary

The Asset



- 100 claims (~5,000 ha) in the Bellechasse Mineral Belt, Quebec.
- Hosts the Champagne Deposit (Historical Resource).
- Adjacent to Bellechasse-Timmins Gold Deposit.

The Edge



- Mercator AI modeling synthesized 500+ data layers.
- Identified targets invisible to historical analog exploration.
- 5 new high-priority targets (Belle-1 to Belle-5) defined.

The Context



- Located in the Magog Group: Fertile ground for IRGS and VMS systems.
- Safe jurisdiction with established infrastructure.
- Year-round road access on private land.

The Ask



- \$1.17M Total Budget.
- Phase 1: Data Compilation & Ground Truth.
- Phase 2: 3,000m Drill Program to validate AI targets.

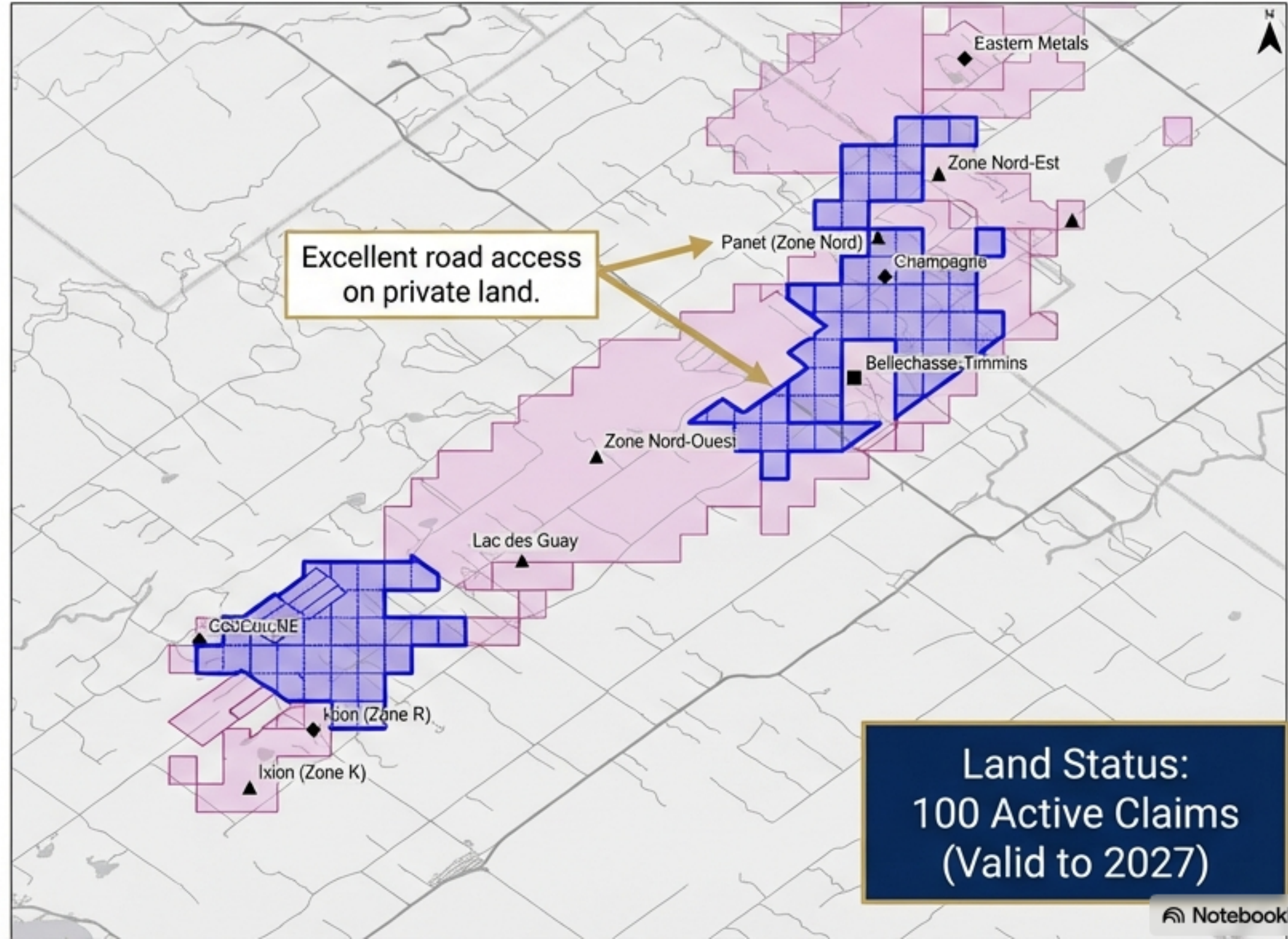
Prime Location & Infrastructure Advantage

Regional Access



- 75 km SE of Québec City.
- 45 km NE of Saint-Georges.
- 10 km from logistics hub at Saint-Justine-Station.

Claim Fabric & Local Access



Regional Geology: The Bellechasse Mineral Belt

Geological Context

Tectonic Setting

- Dunnage Zone of the Northern Appalachian Fold Belt.

Host Rocks

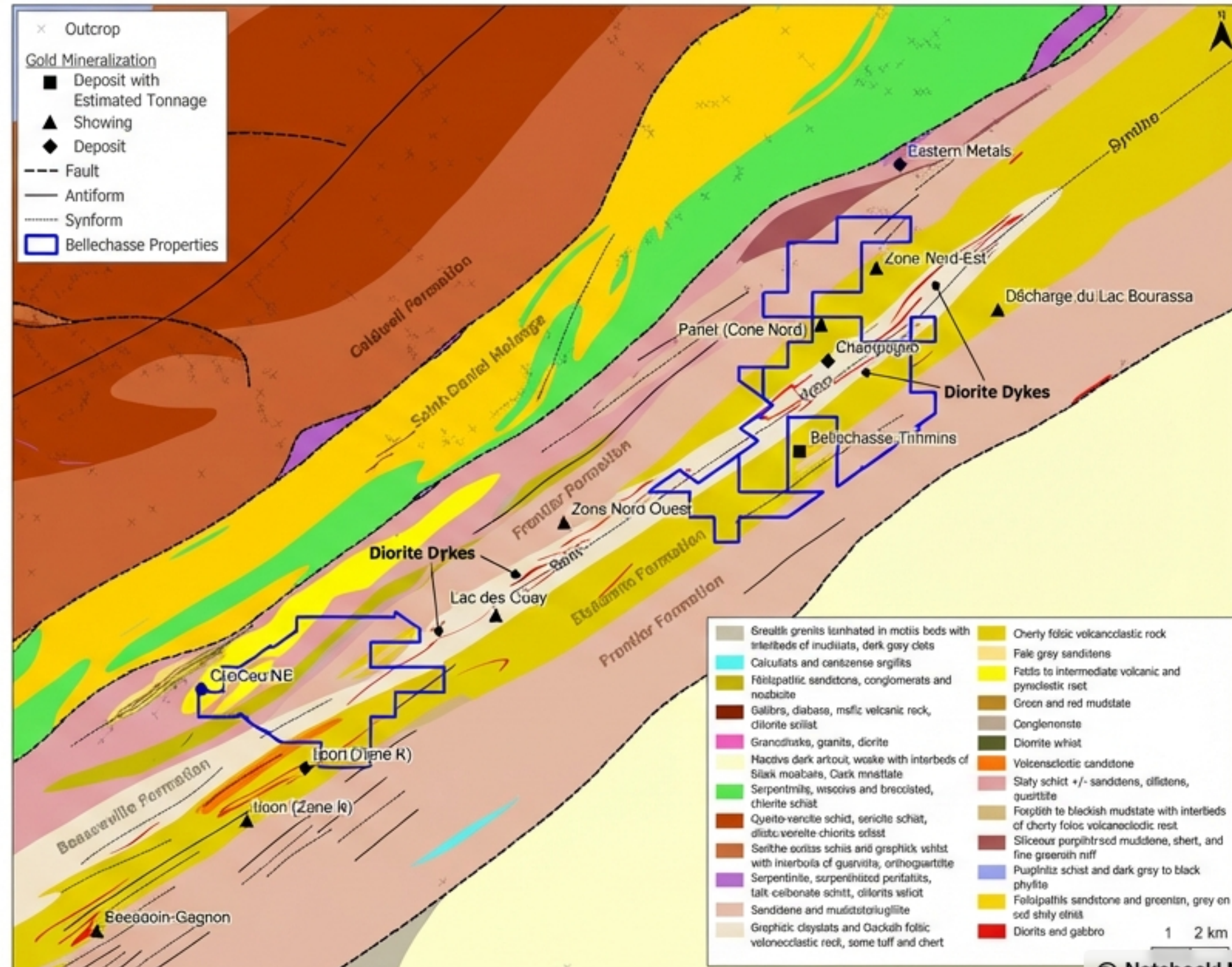
- Magog Group / Beauceville Formation.
- Black clayslate and mudstone intruded by diorite/gabbro.

Mineralization Styles

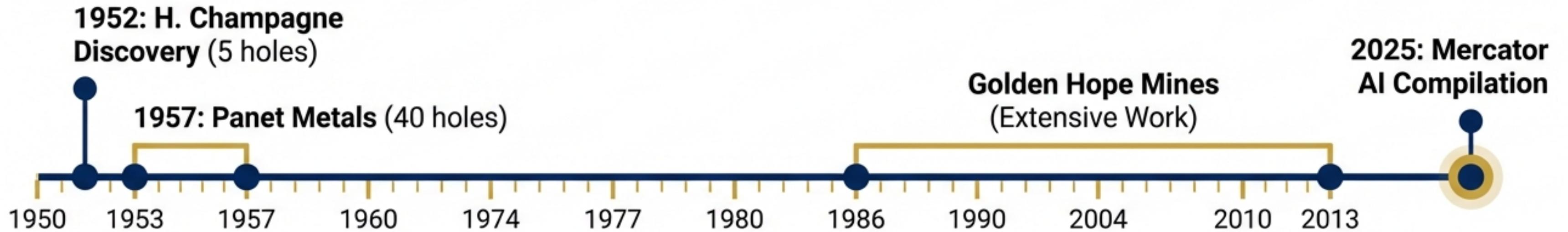
- Intrusion-Related Gold Systems (IRGS).
- VMS-style (Zn-Cu-Au-Ag).

Structural Control

- Mineralization focuses along the flanks of the St. Victor Syncline.



The Opportunity: A Rich History with Fragmented Data



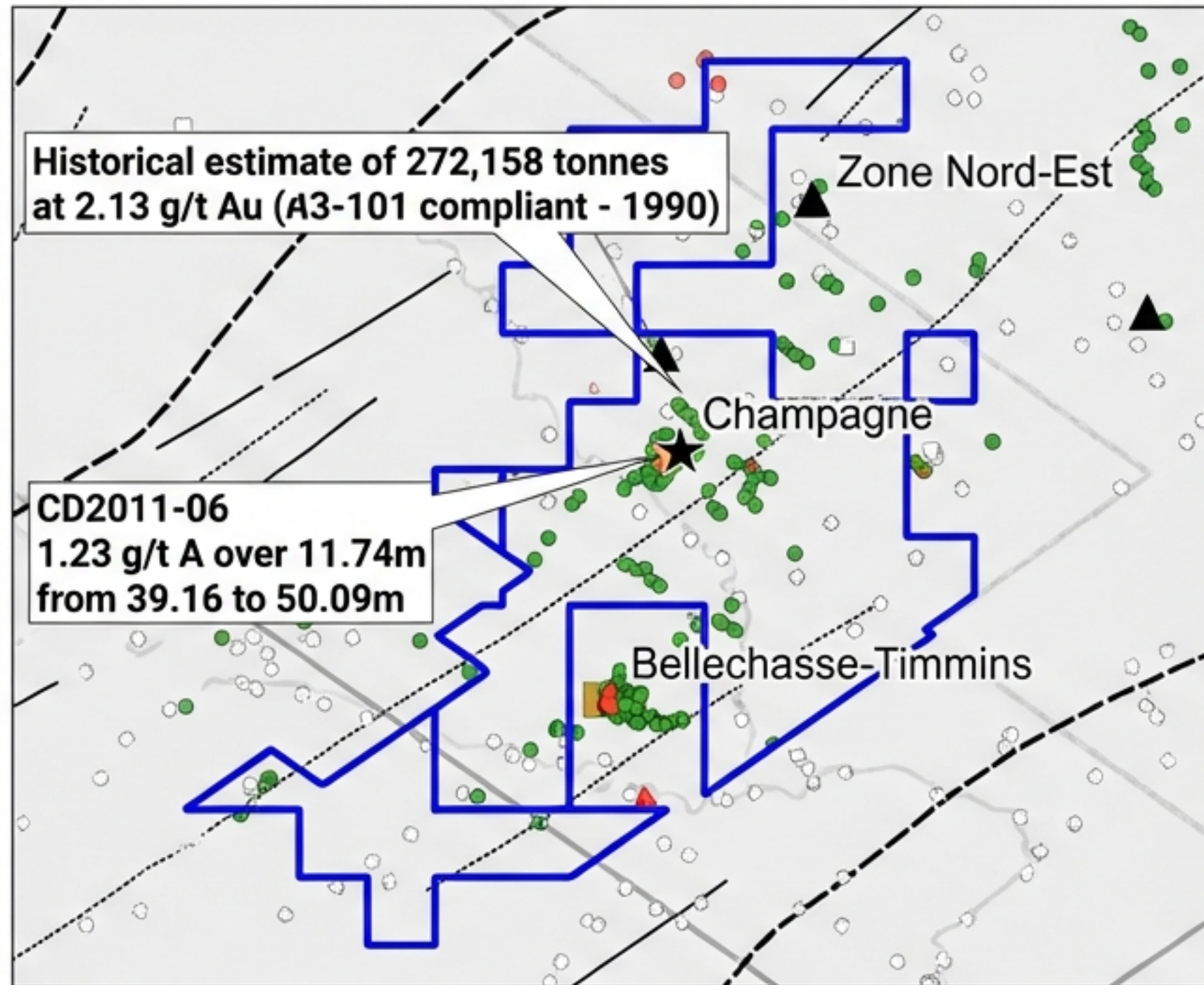
The Data Gap

- 129 historical drill holes exist.
- Critical data missing from government digital sets (SIGEOM).
- Valuable insights locked in paper logs and archives.

The Value Arbitrage

- Low-cost digitization of paper records allows for modern 3D modeling.
- We can 'mine the data' before mining the rock.
- Refines targets significantly prior to drilling.

Known Mineralization: The Champagne Deposit



Deposit Profile

- Style: Polymetallic Sedex/VMS.
- Commodity: Zn, Cu, Pb, Au, Ag.

Historical Estimate (Non-Compliant)*

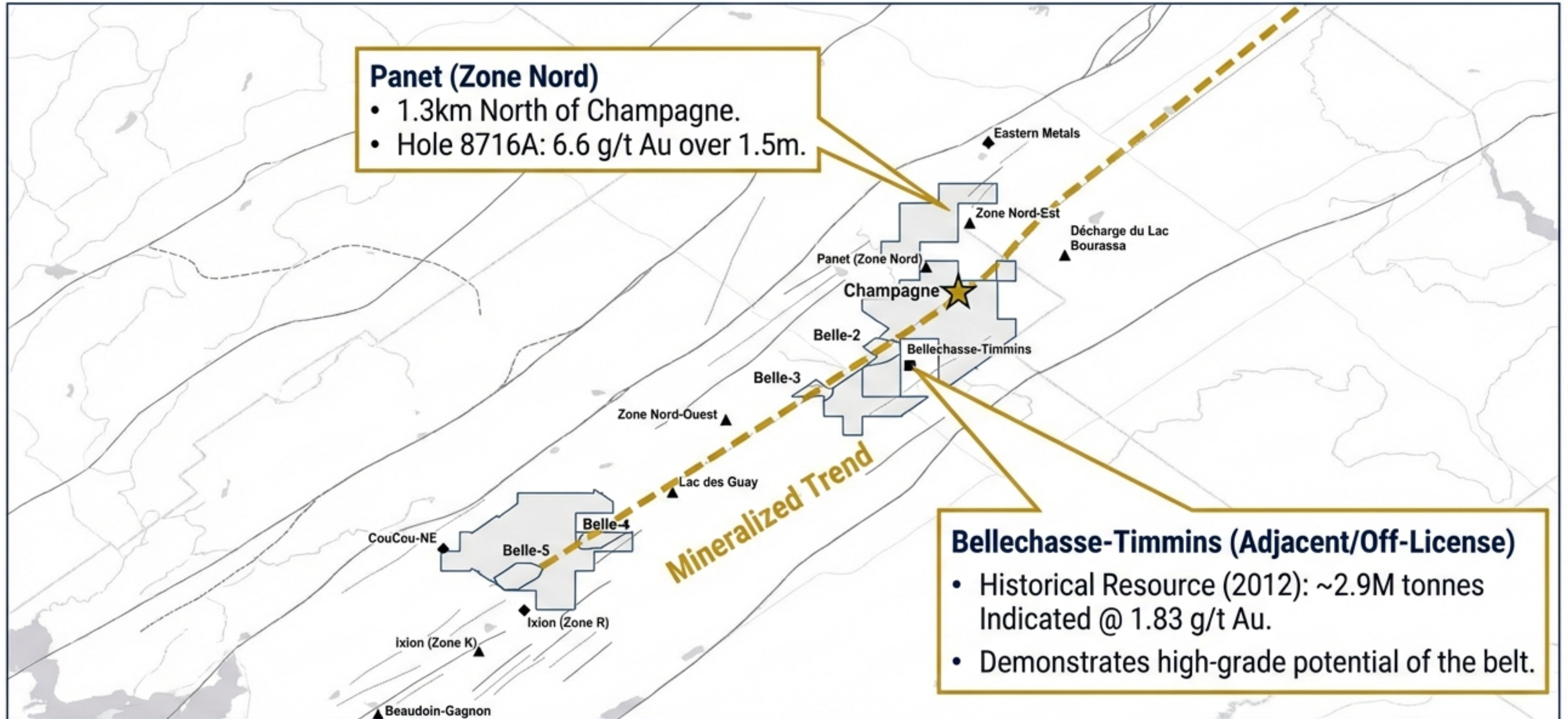
- **~272,158 tonnes**
- Grades: **2.13 g/t Au, 2.68% Zn, 0.40% Cu, 19.88 g/t Ag.**

*(Source: Northern Miner, 1990. Not NI 43-101 compliant.)

Key Drill Intercept (2011)

- Hole CD2011-06
- Interval: 11.74m width
- Grade: **1.23 g/t Au + 1.60% Zn + 11.71 g/t Ag**

Strike Continuity & Regional Endowment



Conclusion: The property sits on a proved mineralized trend with multi-kilometer continuity

The Mercator AI Advantage: Knowledge-Driven Targeting

Inputs (500+ Data Layers)

1. Geochemistry (Au, As, Cu, Zn, Ag)



2. Lithology (Diorite, Gabbro, Mudstone)



3. Structure (Folds, Faults, Lineaments)



4. Magnetics (Analytical Signal)

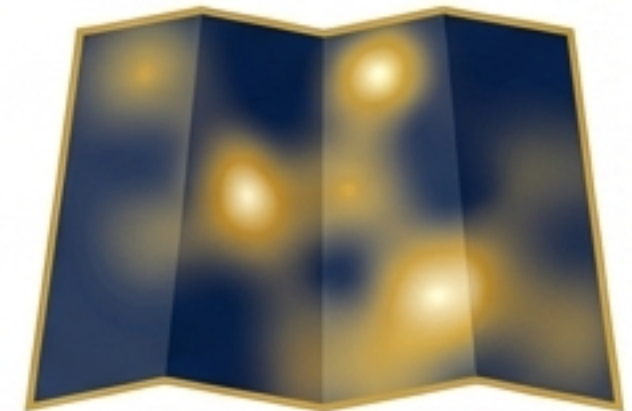


AI Processing & Weighting

- Geochem: **40%** 
- Lithology: **30%** 
- Structure: **20%** 
- Magnetics: **10%** 

Output

- Prospectivity Heat Map



- Probability Score (0 to 1)



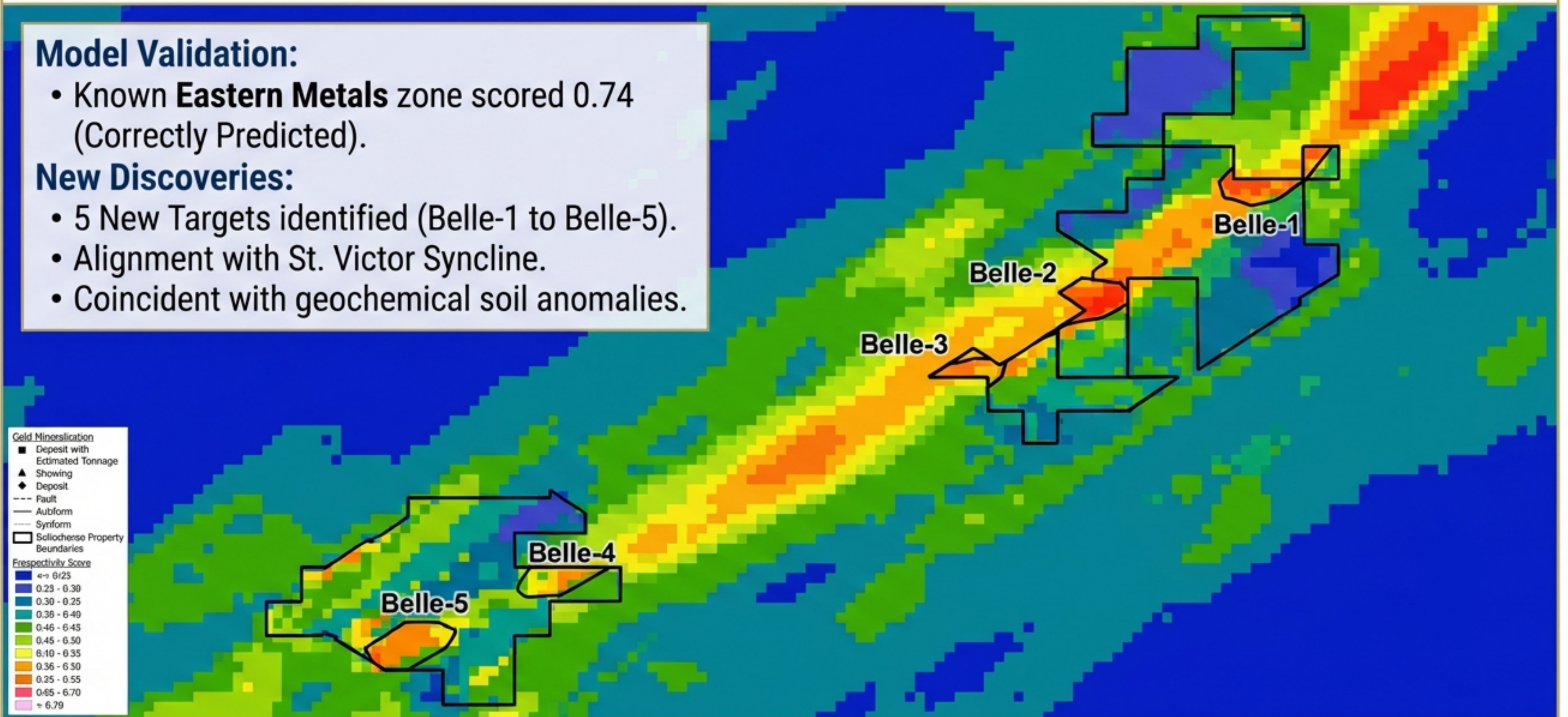
AI Results: The Prospectivity Heat Map

Model Validation:

- Known **Eastern Metals** zone scored 0.74 (Correctly Predicted).

New Discoveries:

- 5 New Targets identified (Belle-1 to Belle-5).
- Alignment with St. Victor Syncline.
- Coincident with geochemical soil anomalies.



Priority Targets: The 'Belle' Zones

Target	Score	Priority	Key Association
Belle-3	0.56	Very High	St. Victor Syncline / Structural Trap
Belle-1	0.56	Very High	Proximity to Champagne / Panet
Belle-2	0.55	Very High	Lithological Contact
Belle-5	0.53	High	St. Victor Syncline
Belle-4	0.51	Moderate	Geochem Anomaly

Analysis:

- Top targets (Belle 1-3) show strong correlation between structural traps and soil anomalies (Au, As, Cu).
- Located at the contact between Beauceville and Etchemin formations.
- Immediate focus for Phase 2 drilling.

Phase 1: Data Compilation & Ground Truth

Budget: \$100,000

Data Recovery

- Compile texts, maps, and logs from historical paper reports.
- Retrieve data missing from government sets.

Modeling

- 3D modeling of historical drilling.
- Reprocess airborne geophysics.

Field Work

- 15 days of field mapping.
- Ground truthing AI hotspots.
- Sampling.

Outcome

- Refined Drill Targets.
- Updated AI Model.

Phase 2: Drill Testing & Resource Upgrade

Budget: \$1.07M

3,000 meters

Diamond Drilling Program

20 Days

Ground Geophysics

Primary Goals

1. Validate AI Targets:

- Test the 'Belle' series anomalies (Belle 1-5).

2. Resource Confirmation:

- Drill test Champagne Deposit extensions.
- Upgrade historical estimates toward NI 43-101 compliance.

3. Expansion:

- Test strike continuity of the Panet and Bellechasse-Timmings trends.

Investment Roadmap & Budget

Item	Phase 1 (Prep)	Phase 2 (Drill)	Total Cost
Data Compilation & AI	\$44,000	-	\$44,000
Geophysics	\$12,000	\$50,000	\$62,000
Field Work & Support	\$44,000	\$94,000	\$138,000
Drilling (3,000m)	-	\$900,000	\$900,000
Assays/Sampling	-	\$25,000	\$25,000
TOTAL ASK	\$100,000	\$1,069,000	\$1,169,000

Phase 3 Contingency (Success-Based)

- 10,000m Resource Definition Drill Program
- Estimated Cost: ~\$3.18M

Why Bellechasse? Why Now?

1. Strategic Asset

- Accessible location in the Bellechasse Mineral Belt, adjacent to major deposits.

2. Proven Endowment

- Historical high-grade gold and polymetallic mineralization (Champagne Deposit).

3. The AI Edge

- Mercator's proprietary model has revealed 5 fresh, high-probability targets.

4. Data Arbitrage

- Significant value to be unlocked by digitizing 129 historical drill holes.

5. Clear Execution Plan

- A systematic, phased approach to convert historical data into modern resources.

Appendix: Land Tenure & Claim Status

Title Holder	Claims Count	Expiry Year	Status	Area (Ha)
Glenn Griesbach	86	2027	Active	~4,300
Junita Tedy Asihito	14	2027	Active	~700

- **Total Claims:** 100
- **Total Area:** ~5,023 hectares
- **Good Standing:** All claims active through 2027
- **Obligations:** ~\$111,600 in required expenditures.