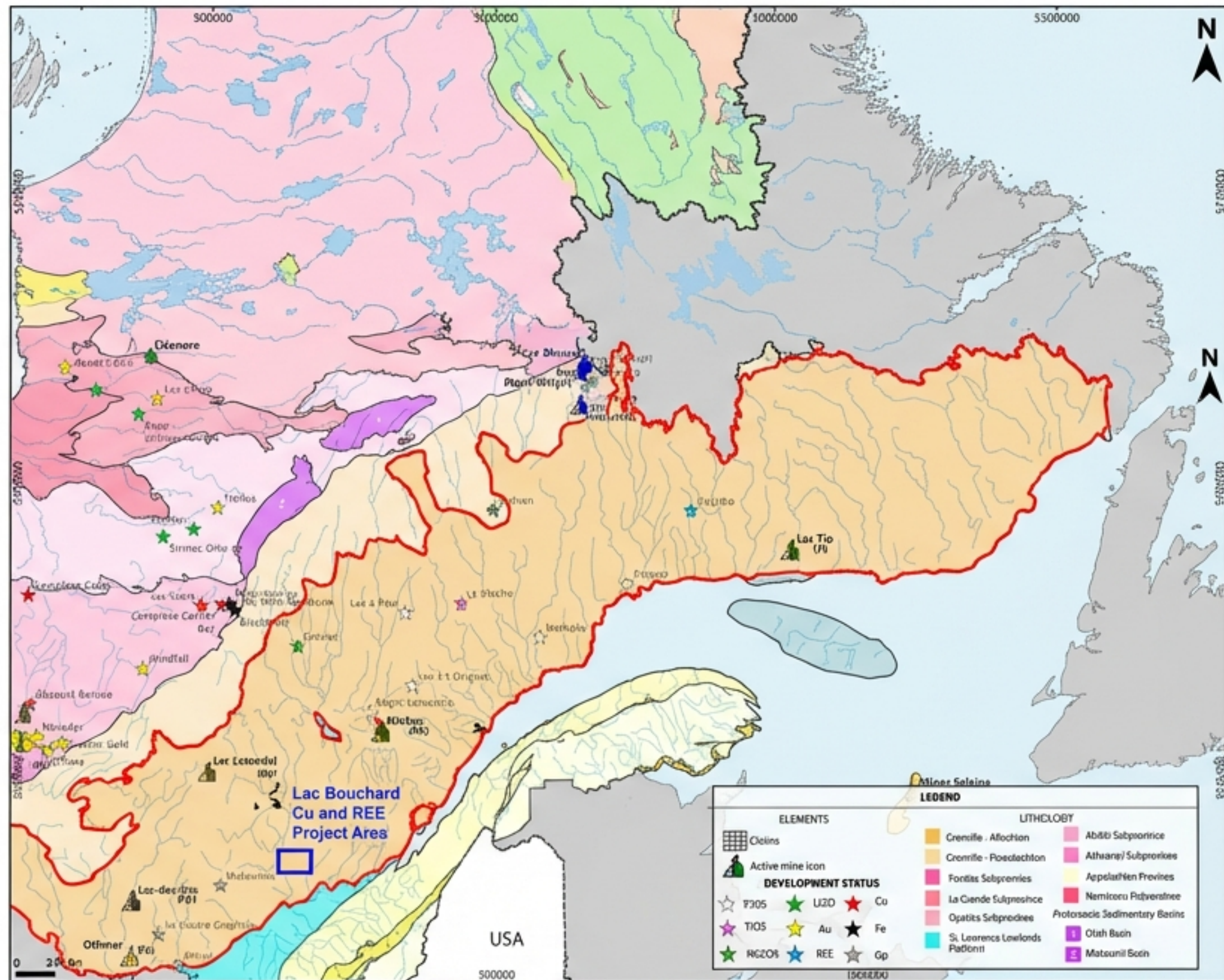


NQC LITHIUM CORP.

Lac Bouchard REE Project

AI-Driven Prospectivity in the Grenville Province

Northern Quebec, Canada



Prepared by Mercator Geological Services | November 2025

The Validated Opportunity

High-Grade History Meets Modern AI

01



Strategic Location

Situated in Quebec's Grenville Province, a Tier-1 mining jurisdiction jurisdiction known for critical mineral systems.

02



59.23%

Validated Grades

Historical assays of 59.23% REE (Monazite) and 2.57% Cu (Chalcopyrite).

03

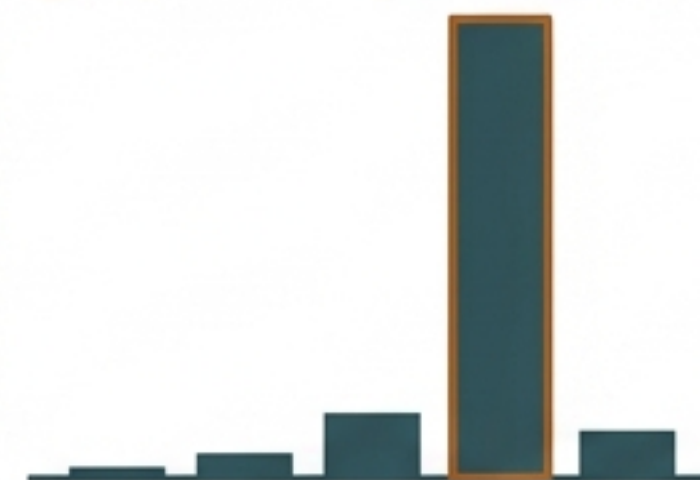


Technological Upside

2025 AI Prospectivity Modeling by Mercator has identified 5 distinct high-priority targets.

04

\$530M



The "Niobec" Analog



Located in the same geological corridor as the Niobec Mine (Nb producer), which sold for ~\$530M.

Infrastructure & Access: A Logistical Advantage

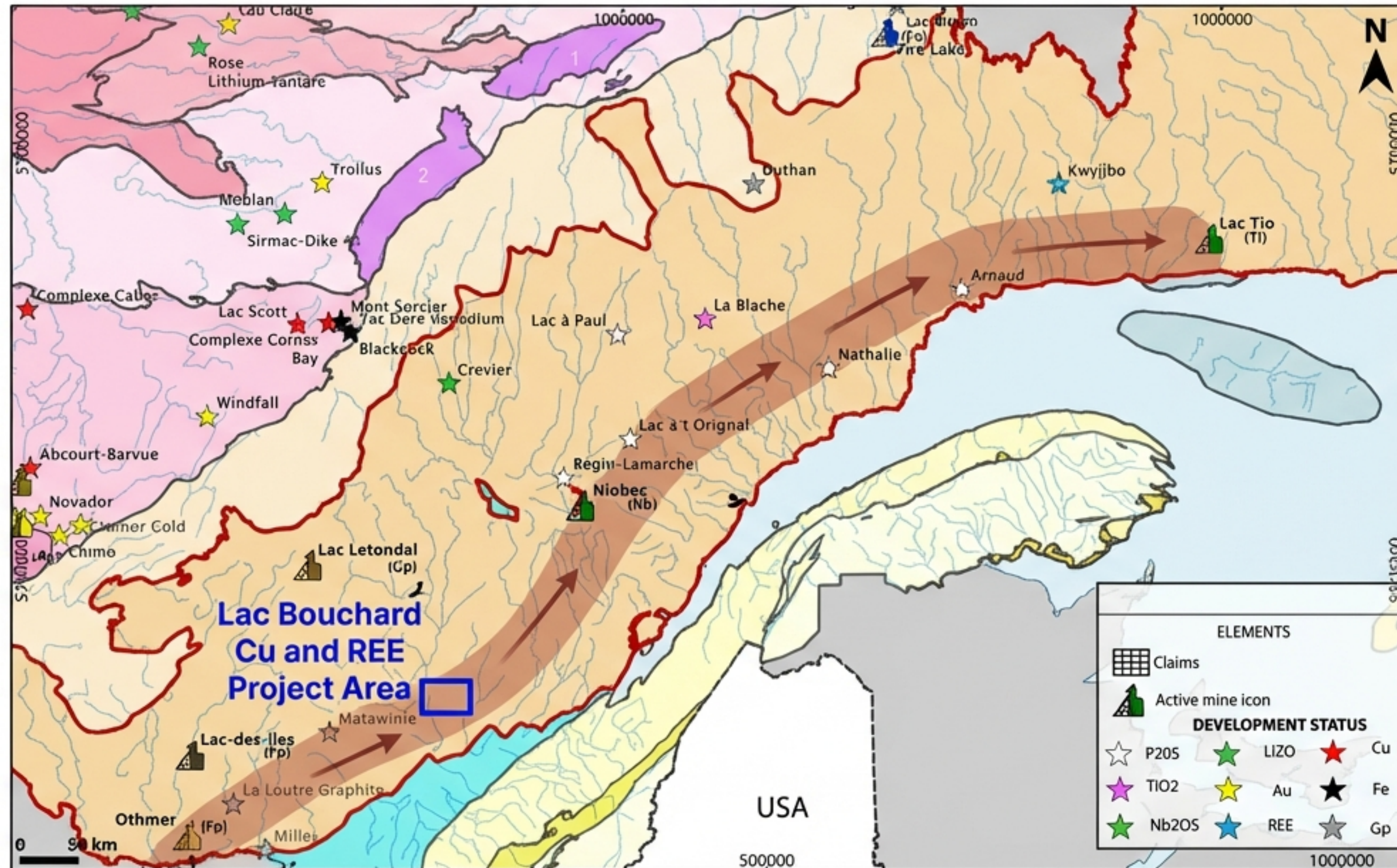
Strategic location and robust infrastructure ensuring efficient project operations.

- ✓ **Location:** Mékinac Regional County, 65 km north of Trois-Rivières.
- ✓ **Access:** <2 hours drive from Quebec City.
- ✓ **Last Mile:** Paved road access (Chemin Saint-Joseph) directly to property.
- ✓ **Support:** Near skilled labor and power in Saint-Tite and Shawinigan.

Year-round access for drilling equipment via internal logging roads.



Regional Context: The Grenville Province Advantage



The Niobec Anchor

One of only three major niobium producers globally.

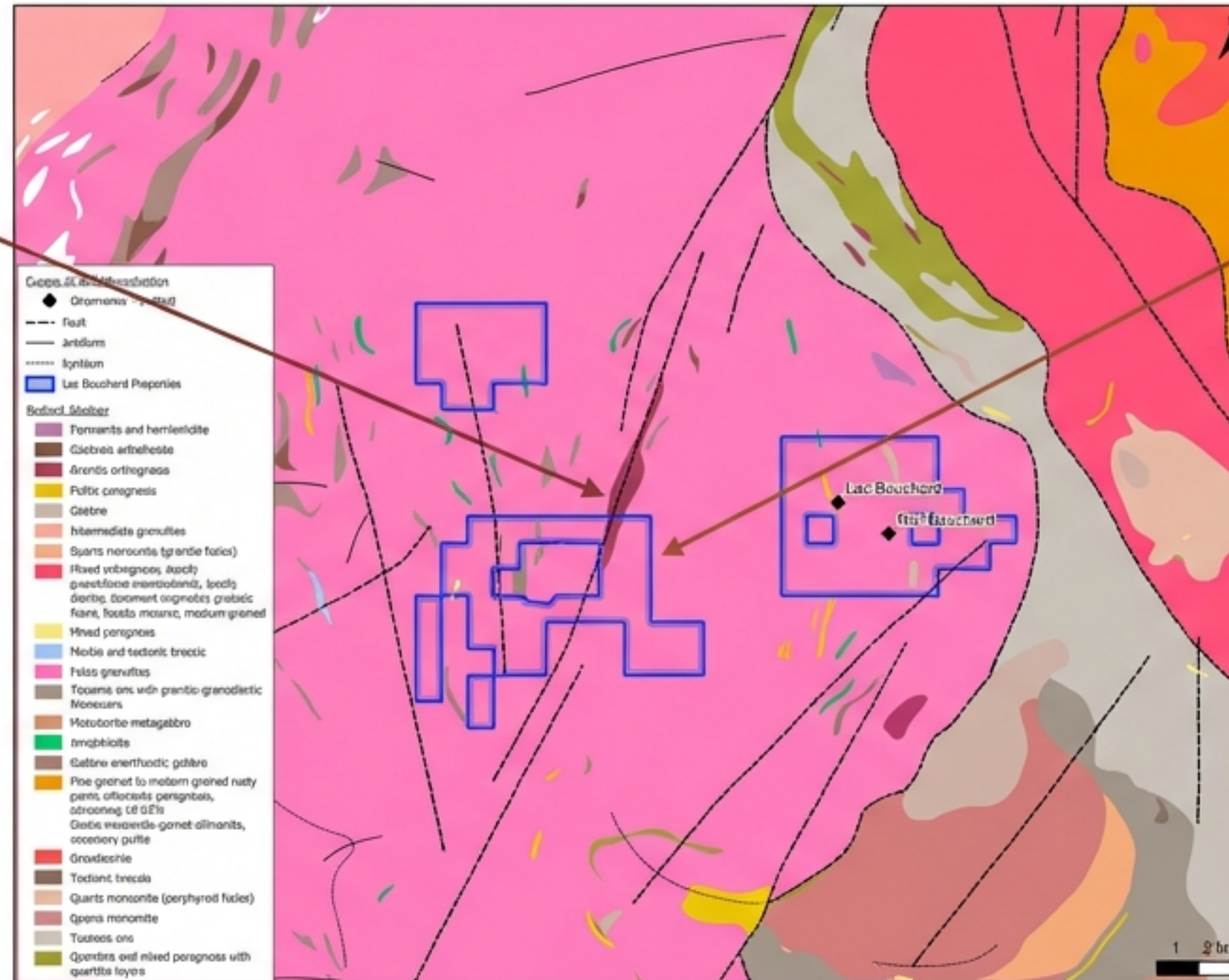
Sold to **Magris Resources** for ~CAD \$530 Million (2014).

Lac Bouchard (~200 km distance) shares the same regional framework (Grenville Allochthon), Carbonatite and Alkaline systems prospective for REE-Nb-Zr.

Property Geology: Two Distinct Mineralization Styles

Target A: Pegmatite-Hosted REE + U + Th

- Late-stage pegmatite dykes cutting gneiss/diorite.
- Comparable to 'Strange Lake' style deposits.
- Feature: 45-meter wide pegmatite dyke.



Target B: Contact-Hosted Cu-Mo

- Disseminated/Vein hosted in carbonate-rich layers between quartzite beds.
- Geometry: High-grade pods and tabular zones.

The Main Prize: High-Grade REE Pegmatites

Mineralogy



Hosted primarily in Monazite crystals (up to 5cm diameter) within pegmatite dykes.

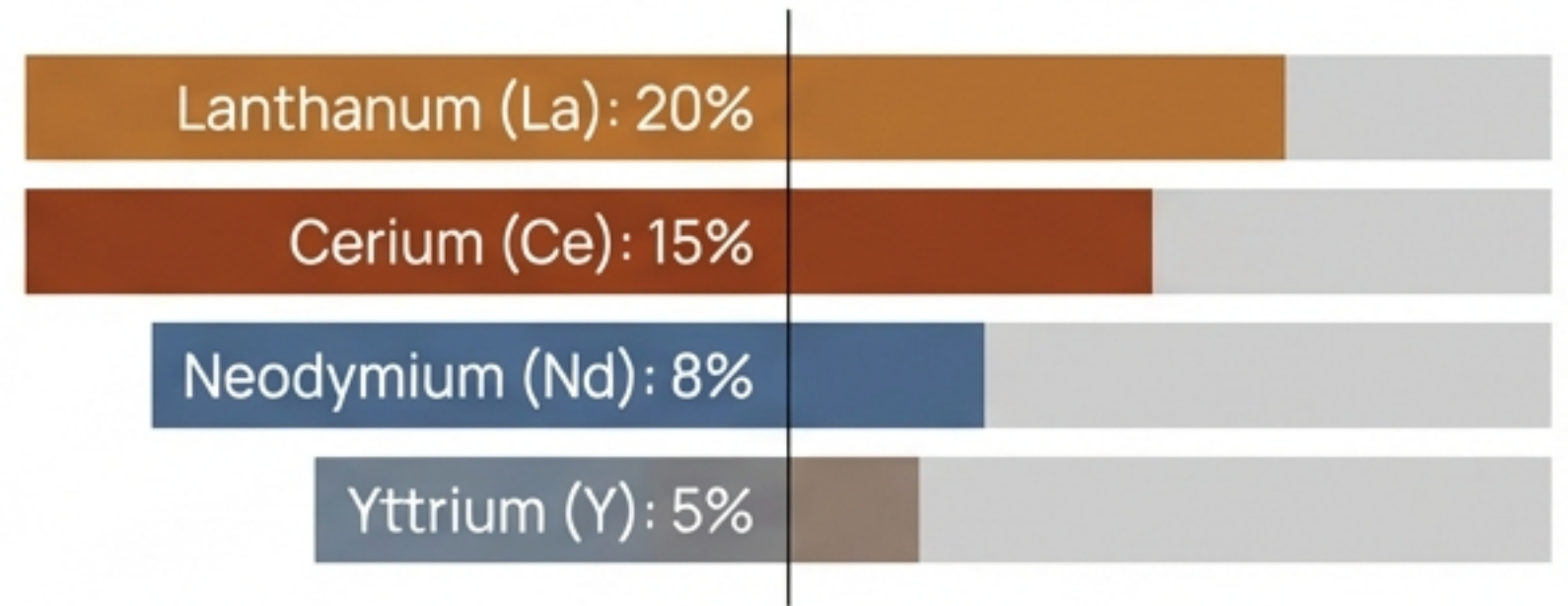
Dimensions



Rivière Bouchard occurrence documents a 45m wide dyke oriented Northwest.

59.23%

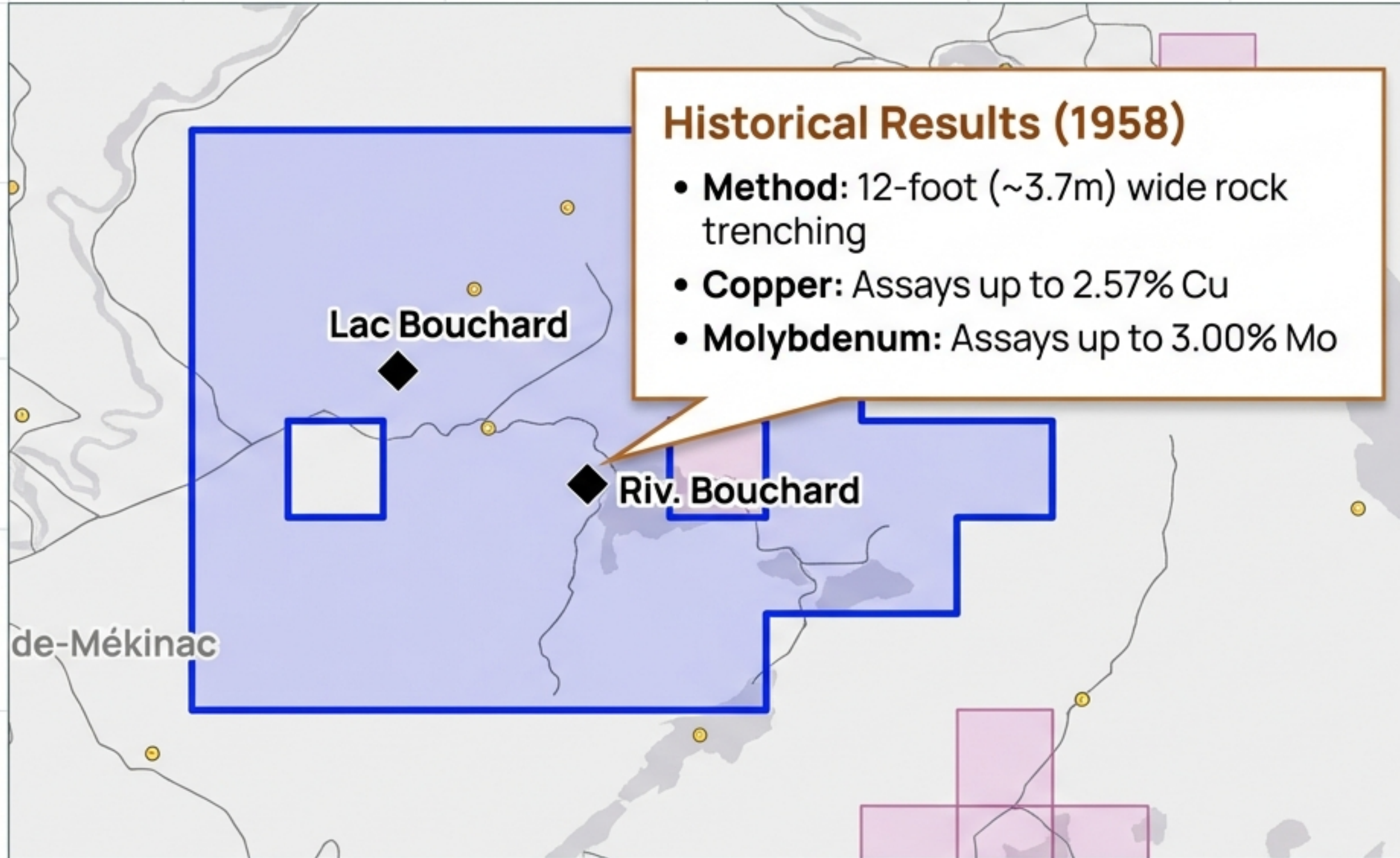
Total REE (1952 Historical Assay)



By-Products

Plus: 8.12% Thorium (ThO₂) and up to 0.38% Uranium (U₃O₈).

The Sweetener: High-Grade Copper-Molybdenum



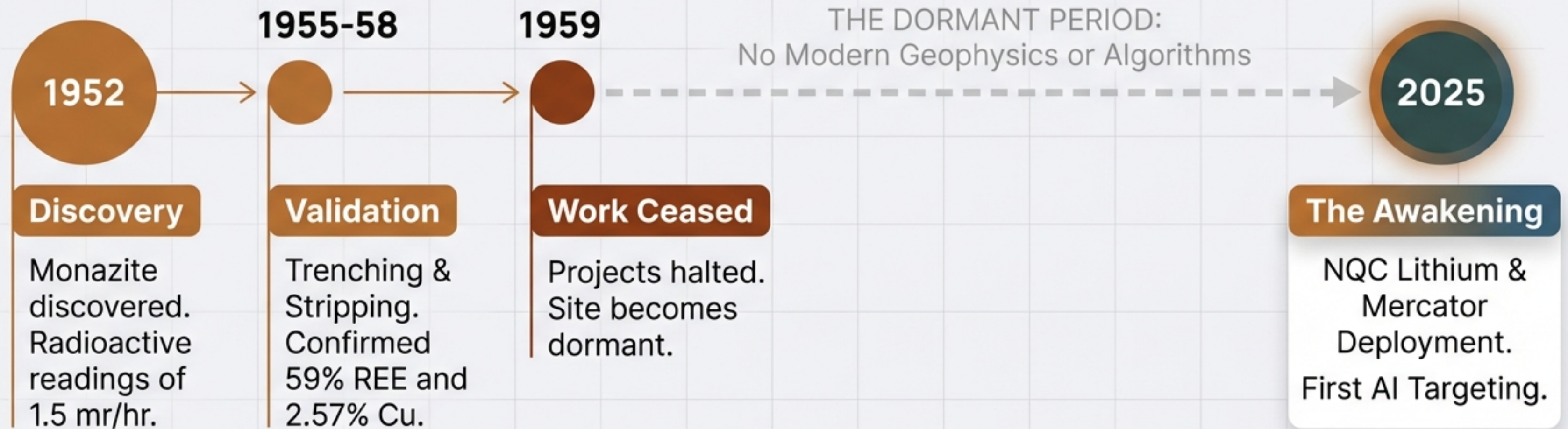
Deposit Style

Contact
metasomatic/strata-
bound
mineralization at
quartzite-pyroxenite
contact.

Disseminated
Chalcopyrite and
Molybdenite within
carbonate-rich layers.

A 60-Year Exploration Gap

Why the opportunity exists today

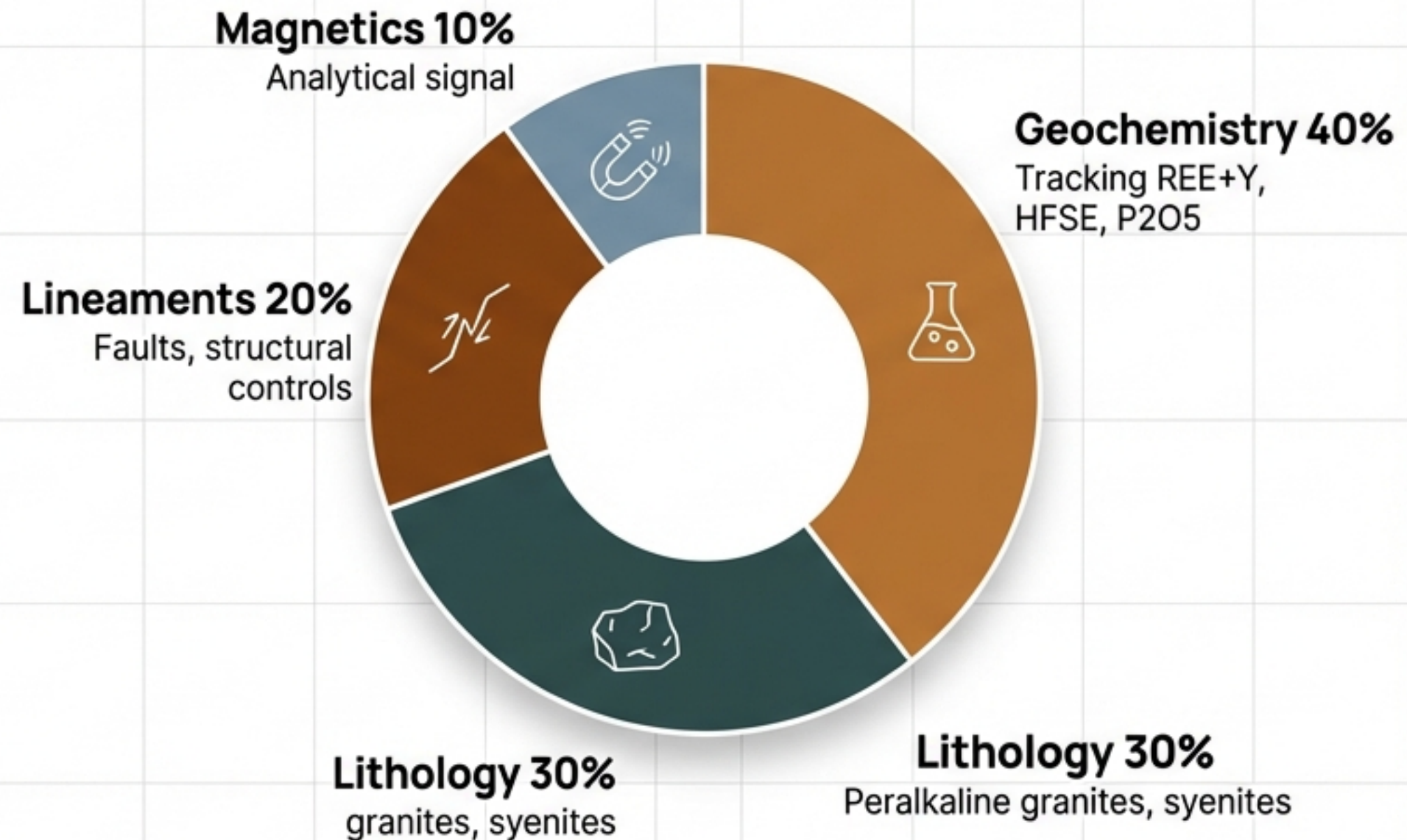


The Modern Edge: AI Prospectivity: AI Prospectivity Modeling

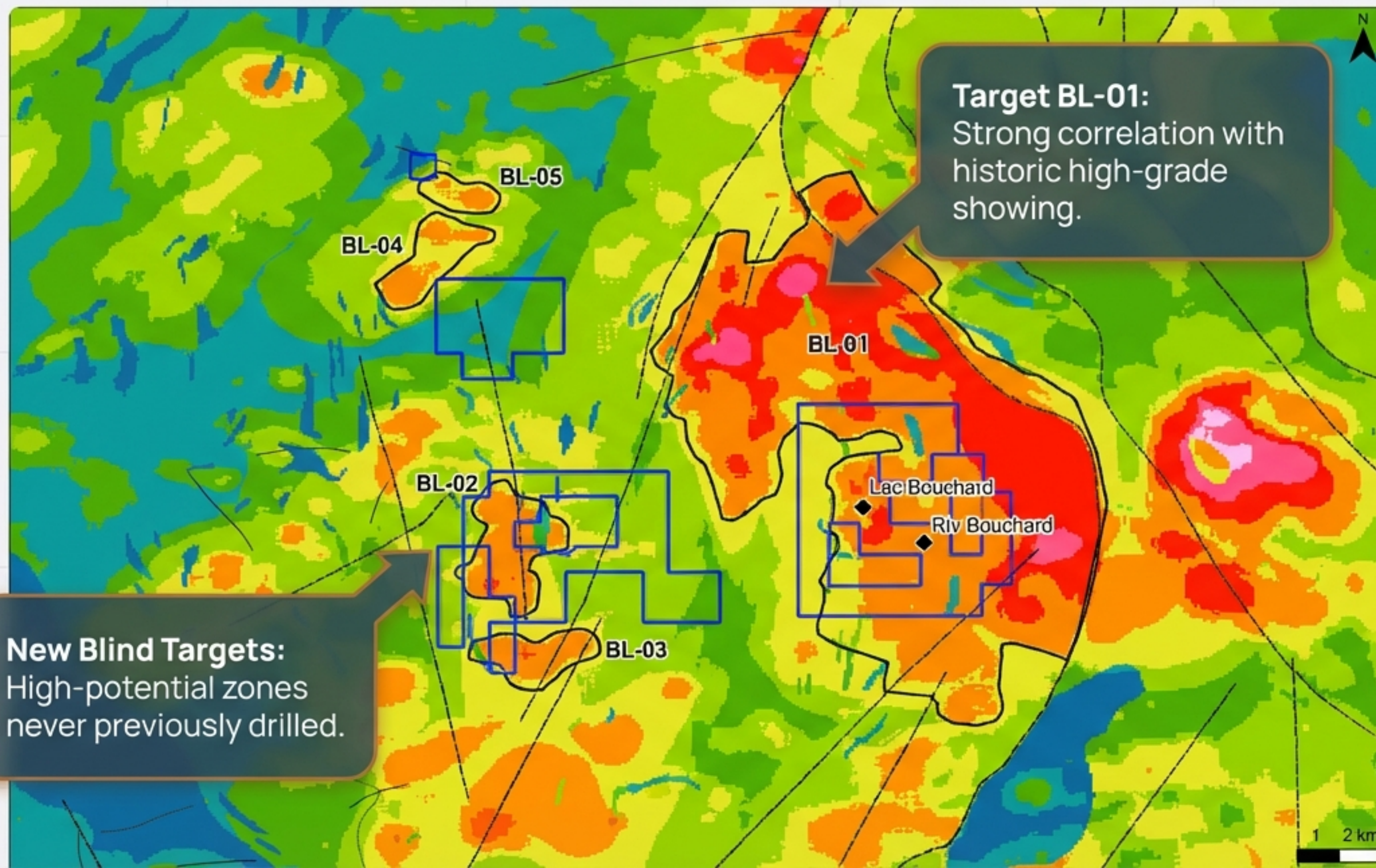
Mercator's knowledge-driven mineral prospectivity tool utilizes up to 500 layers of government geoscience data.

The model is calibrated to identify "Strange Lake" style granite-associated REE deposits.

Algorithm Weights



AI Results: The Prospectivity Heat Map



Target BL-01:
Strong correlation with
historic high-grade
showing.

New Blind Targets:
High-potential zones
never previously drilled.

Prospectivity Score



5 Priority Exploration Targets

Target ID	Score	Description	Primary Drivers
BL-01	0.58	Historic Discovery Zone Highest Confidence	Lithology (0.73), Magnetics (0.82)
BL-02	0.55	Western Blind Target	Structure, Magnetics (0.79)
BL-03	0.56	Western Blind Target	Structure, Magnetics (0.83)
BL-04	0.55	Western Blind Target	Structure, Magnetics (0.85)
BL-05	0.55	Western Blind Target	Structure, Magnetics (0.85)

Scores based on Mercator AI Prospectivity Model (0-1 Scale). See Table 6-2.

Phase 1: Validation & De-Risking



Reconnaissance

Field verification of radioactive pegmatite zones.



Sampling

Confirmatory sampling of priority areas BL-01 to BL-05.



Mapping

Detailed geological mapping.

Budget Breakdown

Total Phase 1 Budget: ~\$49,000 CAD

- Mapping/Sampling (2 Geologists, 10 days): \$20,000
- Support/Logistics: \$24,000
- Assays: \$5,000

Phase 2: Drilling for Discovery

Ground Geophysics



Radiometric and Magnetic surveys over high-priority targets.

\$50,000

Diamond Drilling



1,000 meters of initial drilling to define geometry and continuity.

\$450,000

Analysis & Support

Core logging, sampling, and logistics.

\$80,000

Total Phase 2 Budget: ~\$580,000 CAD

Summary & Investment Case

- ✓ **Proven High-Grade System:** Historic assays of 59% REE and 2.57% Cu confirm the system is fertile.
- ✓ **AI-Validated Upside:** Modern modeling confirms the historic discovery and unlocks 4 new targets.
- ✓ **Underexplored:** No modern work since 1959—a true ‘time capsule’ opportunity.
- ✓ **Strategic Location:** Grenville Province, near Niobec (\$530M valuation), with excellent infrastructure.
- ✓ **Clear Execution:** Fully budgeted 2-phase program to move from target definition to drilling.

NQC LITHIUM CORP

1208 West Pender St., 3rd Floor, Vancouver, BC V6E 2S8

Technical Report Author:

Mercator Geological Services (65 Queen St, Dartmouth, NS)

Forward-Looking Statements & Disclaimer

Certain statements in this report constitute forward-looking statements that involve risks and uncertainties. Actual results may differ materially. This presentation does not constitute an offer to sell or a solicitation of an offer to buy securities. The information herein has been prepared by NQC Lithium Corp and Mercator Geological Services. Historical data has not been verified. Exploration involves high risk. Readers are cautioned not to place undue reliance on forward-looking statements. These statements speak only as of the date of this document.



mercator | GEOLOGICAL
SERVICES