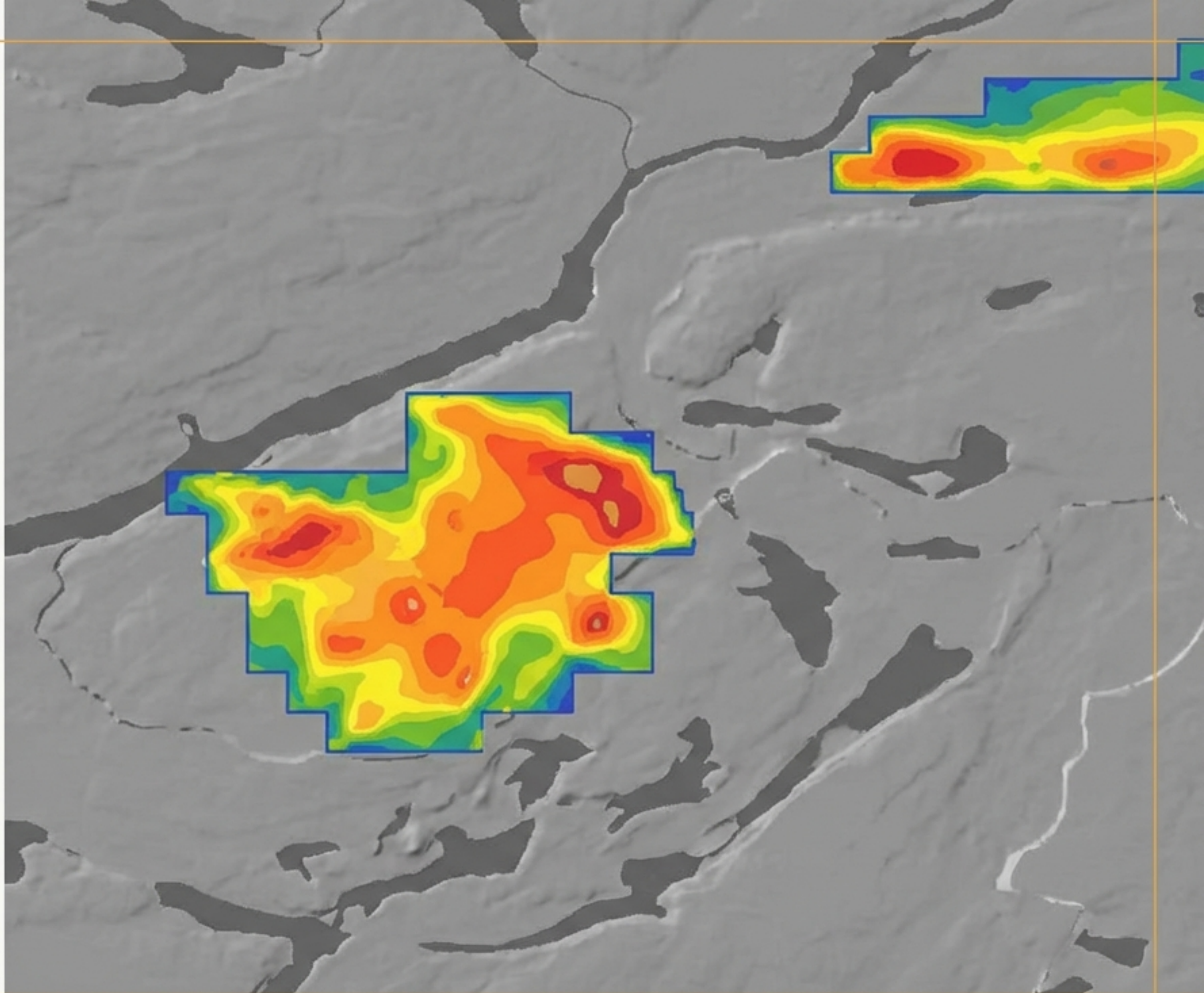


# Piscau-Nord Gold Project

AI-Driven Exploration in  
the Sérigny River Region,  
Northern Quebec



NQC LITHIUM.  
Nord-du-Québec Lithium



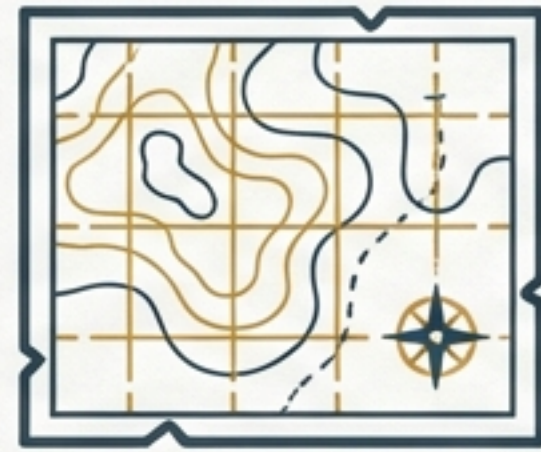
**mercator**  
Geological Services

# A Data-Rich Discovery Opportunity

The Piscau-Nord project combines a massive, underexplored land package with verified high-grade gold occurrences, now de-risked through proprietary AI modeling.

## The Scale

367 Mineral Claims  
covering >17,000 hectares.



## The Proof

Historical discovery of 2.1  
g/t Au at the Piscau-Nord  
Showing.



## The Upside

19 Distinct Target Areas  
identified by Mercator's AI  
prospectivity model.



## The Commodities

Primary Gold potential with  
significant Lithium and  
Ni-Cu-PGE strategic value.



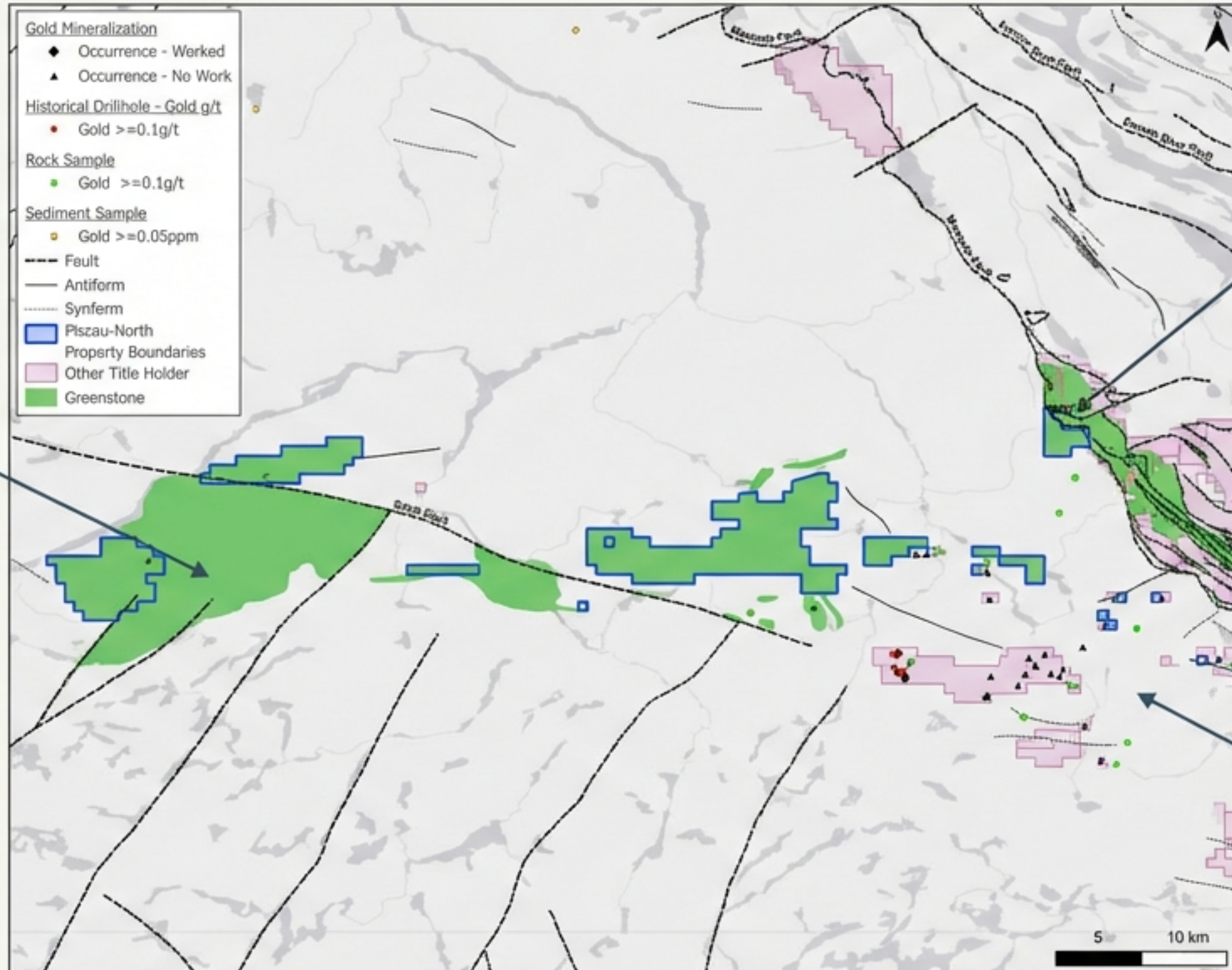
# Strategic Location in the Sérigny River Region



- Located 150 km northwest of Schefferville, QC, north of the Caniapiscau Reservoir.
- Accessible via regional airports and seaplane bases (Schefferville and Lake Pau).
- Connection to the Trans-Taiga Road (operational in summer).
- Claims situated in the mining-friendly James Bay/Nunavik territory, subject to the Québec Mining Act.

# Geology of the Gayot Greenstone Complex

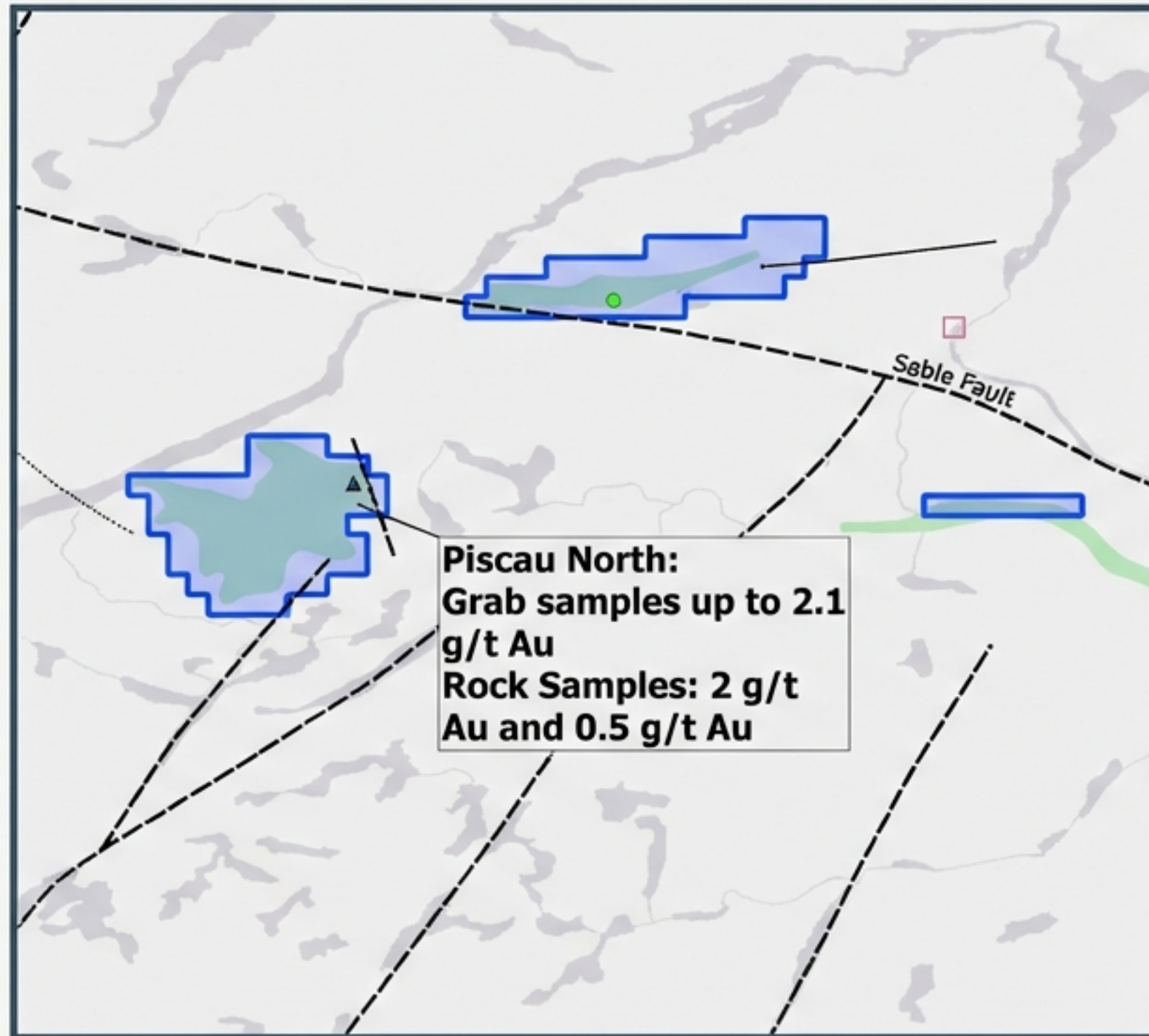
**Piscau Belt:** 8km x 6km enclave. Amphibolites, Iron formations, mafic/ultramafic dykes.



**Cania Belt:** 8km x 2km belt bordered by the Sable Fault. Mafic amphibolites.

**Regional Context:** Junction of La Grande, Minto, and Ashuanipi sub-provinces. 13 known gold occurrences in the region.

# Verified Historical Mineralization



## The Discovery (2009):

- **Piscau-Nord** Showing grab samples returned **2.1 g/t Au**.
- No follow-up work conducted since 2009—significant opportunity.

## Mineralogy:

- Gold associated with disseminated arsenopyrite in quartz-rich metagabbro.
- Heavy alteration observed: sericite, silica, chlorite.

## Copper Anomalies:

- Rusty horizons in the Piscau Belt showing values up to **1,400 ppm Cu**.
- Visible chalcopyrite reported in mylonitic zones.

# The Critical Minerals Upside: Lithium & Nickel

## Lithium Potential

- **Untested Pegmatites:** Large white pegmatites (>900m<sup>2</sup>) identified but never drilled.
- **Surface Data:** Lake sediment samples show >30 ppm Li.
- **Regional Neighbors:** Near WhiteRock Lithium's Sacred Banana project (2.0% Li<sub>2</sub>O) and Perseverance Metals' Capuchin discovery.

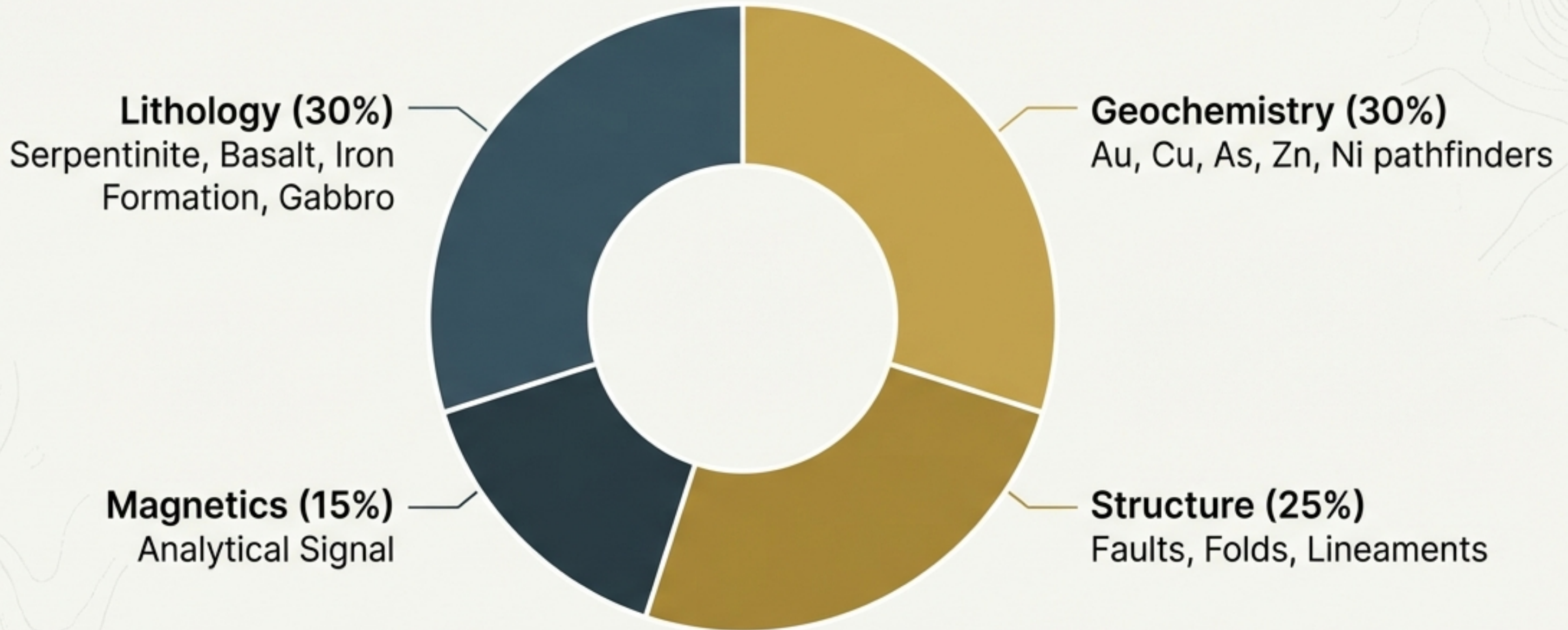
---

## Ni-Cu-PGE Potential

- **Geological Setting:** Favorable for large magmatic deposits.
- **Regional Trend:** Perseverance Metals' Lac Gayot project (200 km west) intersected 4.13% Ni and 0.33% Cu.

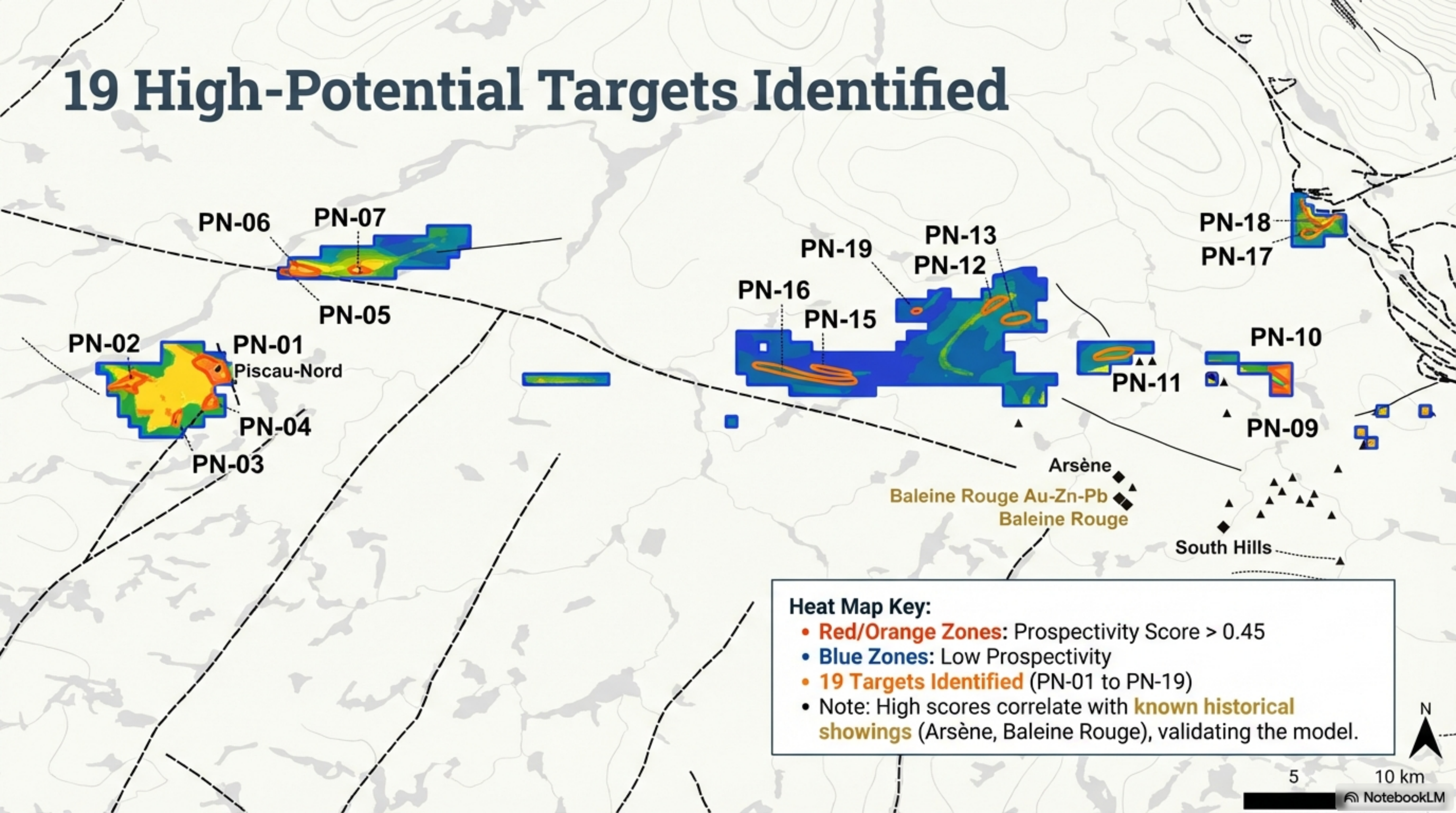
# Methodology: AI & Knowledge-Driven Targeting

Processing 500 layers of government geoscience data to identify anomalies.

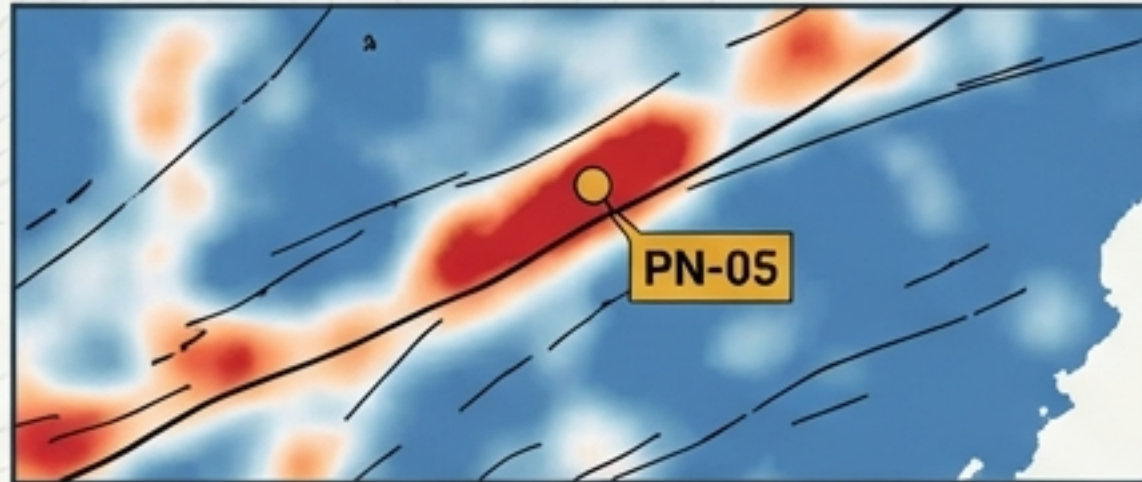


Output: A granular Prospectivity Score (0 to 1) identifying high-probability zones.

# 19 High-Potential Targets Identified

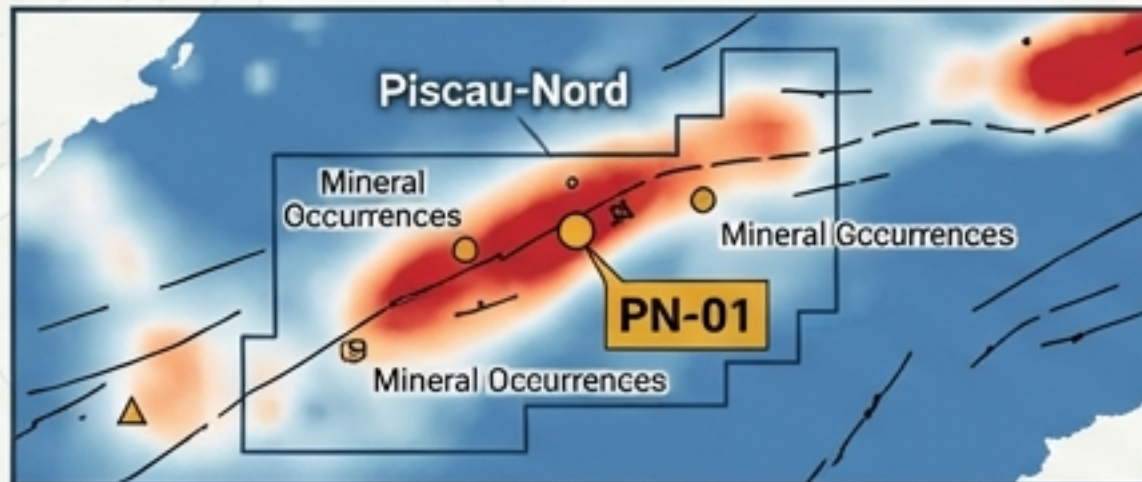


# Priority Exploration Zones



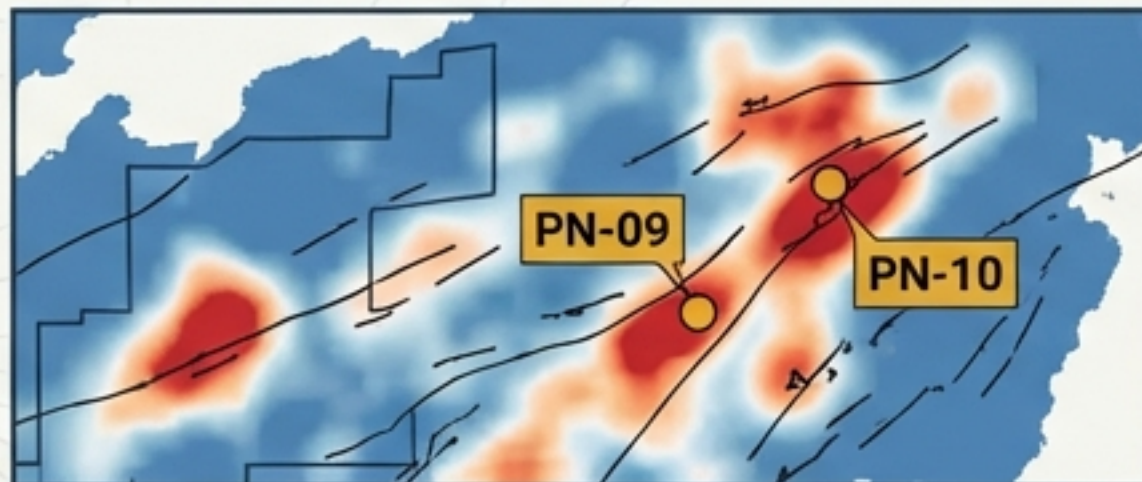
## Target PN-05 (Highest Priority)

Score: 0.56. Located directly along the structurally critical **Sable Fault**. Strong lithology and lineament correlation.



## Target PN-01 (Piscau-Nord)

Score: **0.50**. Site of the original **2.1 g/t Au** discovery. Confirmed high-probability zone for expansion.



## Target PN-08

Score: 0.51. Situated within the Lilois Complex with favorable lithology.

### Heat Map Key:

- Red/Orange Zones: Prospectivity Score > 0.45
- Blue Zones: Low Prospectivity
- 19 Targets Identified (PN-01 to PN-19)
- Note: High scores correlate with known historical showings (Arsène, Baleine Rouge), validating the model.



# Target Inventory & Classification

Target	Score	Priority	Geological Context
<b>PN-05</b>	0.56	<b>HIGH</b>	Sable Fault
<b>PN-08</b>	0.51	<b>HIGH</b>	Lilois Complex
<b>PN-01</b>	0.50	<b>HIGH</b>	Piscau Belt (Known Showing)
<b>PN-09</b>	0.50	<b>HIGH</b>	Lilois Complex
<b>PN-10</b>	0.49	<b>HIGH</b>	Lilois Complex

**Portfolio Depth:** 7 Targets ranked 'High Priority' (>0.45), with 12 additional Moderate/Low targets providing a long-term exploration pipeline.

# Phase 1: Data Compilation & Ground Truthing



## Data Integration

Incorporate missing report text and maps into dataset to refine AI model.



## Field Logistics

Helicopter-supported prospecting based out of Schefferville.



## Ground Truthing

Validate historic results (PN-01) and systematically sample new high-priority AI targets (PN-05, PN-08).

# Phase 2: Diamond Drilling

Contingent on Phase 1 Results

## Extension Drilling

Testing depth and strike extensions of known mineralized zones at Piscau-Nord.



## New Discovery Drilling

Testing entirely new targets identified by AI that show surface mineralization in Phase 1.

# Property Status & Tenure

**Ownership:** 100% held by NQC Lithium Corp.

**Standing:** Good standing with renewal dates extending through 2026 and 2027.

**Title:** Clear title allowing for unencumbered multi-year exploration.



# Summary of Value



## Strategic Geology

Situated on a major tectonic boundary hosting multiple gold occurrences.



## Underexplored

Minimal modern work despite confirmed gold and copper.



## De-Risked

AI modeling has pinpointed 19 specific areas for immediate exploration.

NQC LITHIUM.  
Nord-du-Québec Lithium



mercator

Contact: NQC Lithium Corp | Mercator Geological Services